



## 27 Hartley Way, Bishopdown Farm, Salisbury, Wiltshire, SP1 3WS

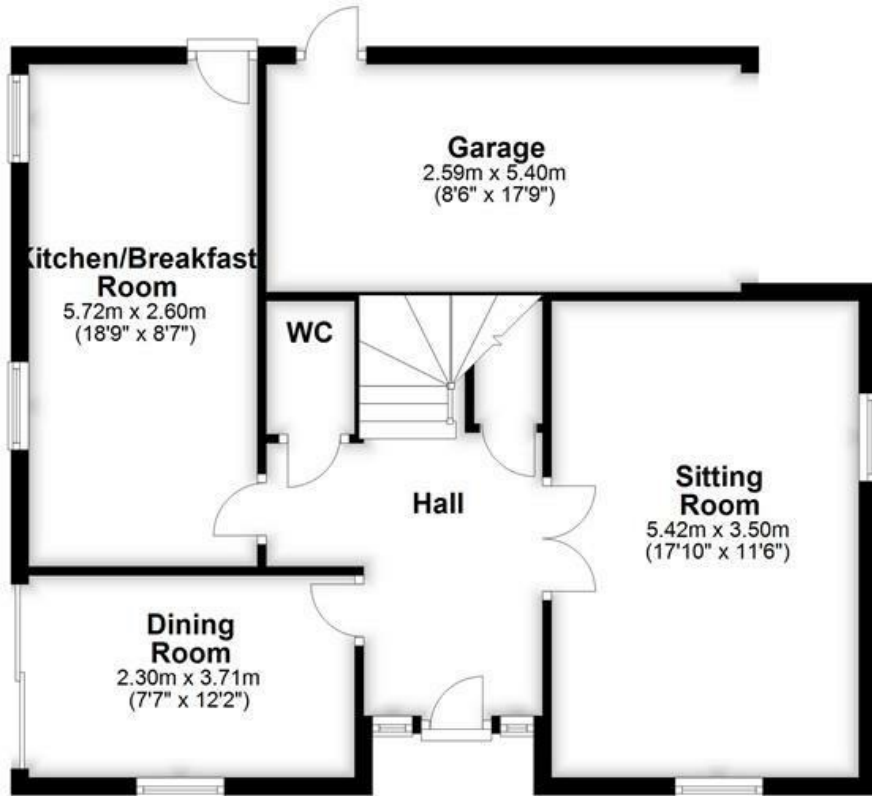
\*\* VIEWINGS ON HOLD DUE TO HIGH DEMAND \*\*\*

- Four bedrooms
- Two reception rooms
- Fitted kitchen/breakfast room
- Cloakroom
- En suite
- Bathroom
- Double glazing
- Gas fired central heating
- Driveway
- Garage

**£1,475 PCM**

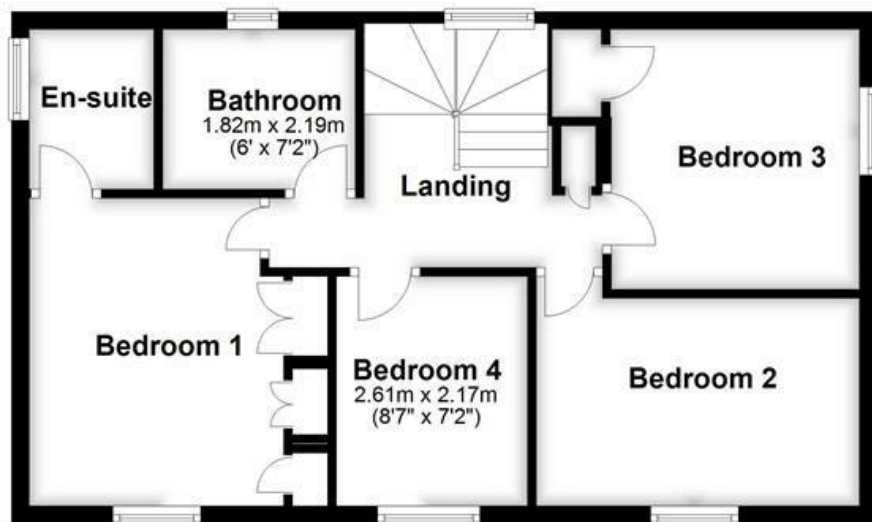
## Ground Floor

Approx. 71.5 sq. metres (770.0 sq. feet)



## First Floor

Approx. 51.3 sq. metres (551.8 sq. feet)



Total area: approx. 122.8 sq. metres (1321.8 sq. feet)

### WHITES

Castle Chambers, 47 Castle Street, Salisbury,  
Wiltshire, SP1 3SP

Tel: 01722 336422/Option 2

www.hwwhite.co.uk

email: lettings-management@hwwhites.co.uk

Energy Efficiency Rating		
	Current	Potential
Very energy efficient - lower running costs		
(92 plus) <b>A</b>		<b>85</b>
(81-91) <b>B</b>		
(69-80) <b>C</b>	<b>69</b>	
(55-68) <b>D</b>		
(39-54) <b>E</b>		
(21-38) <b>F</b>		
(1-20) <b>G</b>		
Not energy efficient - higher running costs		
England & Wales		
EU Directive 2002/91/EC		

Environmental Impact (CO <sub>2</sub> ) Rating		
	Current	Potential
Very environmentally friendly - lower CO <sub>2</sub> emissions		
(92 plus) <b>A</b>		<b>82</b>
(81-91) <b>B</b>		
(69-80) <b>C</b>	<b>64</b>	
(55-68) <b>D</b>		
(39-54) <b>E</b>		
(21-38) <b>F</b>		
(1-20) <b>G</b>		
Not environmentally friendly - higher CO <sub>2</sub> emissions		
England & Wales		
EU Directive 2002/91/EC		